



# DREAMOC DIAMOND

VERSION 1.0 - ADDING TOUCHSCREEN INTERACTIVITY



It is important to read this manual before using the Dreamoc, and to follow advices and instructions on safety, operation and general use to get the best possible experience with your Dreamoc.

The Dreamoc is designed to showcase products and other objects in combination with free floating 3D video animations. If the Dreamoc is used for purposes other than described, the CE marking and guarantee will only be valid after a written approval from Realfiction.

The Dreamoc is design protected in shape and form. Realfiction and Dreamoc are registered trademarks owned by Realfiction ApS.

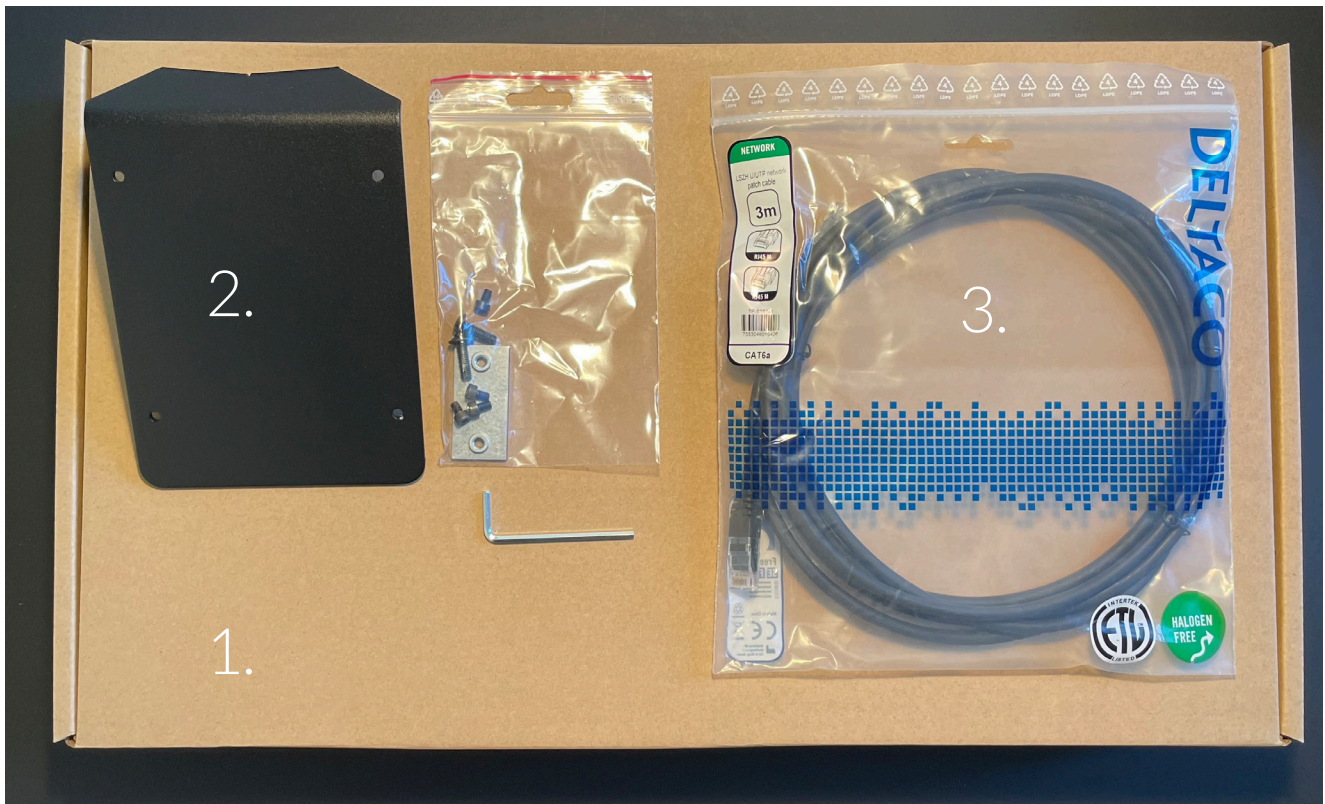
# Contents

Security precautions	3
What you will need	4
How to mount the optional touchscreen	5

## Security precautions

- Installation of the Dreamoc must be done according to this manual, and must be performed by an adult (Over 21 years).
- The Dreamoc must be placed on a horizontal, stable and plane surface.
- Do not install the Dreamoc in narrow passageways or other places where a lot of people and equipment has to pass close by, thereby risking collisions that might cause the Dreamoc to tip over causing human injuries and damage to property.
- The Dreamoc must be connected to a power outlet with current and voltage as described in the product marking.
- During service and cleaning the Dreamoc must be turned off, and the power plug removed from the outlet.
- For safety reasons it is advised not to leave the Dreamoc with the optic open, and for longer than 15 minutes.
- Handle the liquid crystal display (LCD) with care. The LCD is a very delicate display device: Do not press its surface with excessive force, hit it or prick it with a sharp object.
- No sand or dust! Fine sand or dust entering the system could cause malfunctions or defects.
- No water or oil! Water or oil entering the system could cause electric shock, malfunctions or defects.
- The surface of the system will be slightly warm when using, but this does not indicate a fault.
- Environmental conditions: Operating Temperature 0 °C to 35 °C , Operating Humidity 10 % to 80 %, Storage Temperature -20 °C to 60 °C, Storage Humidity 5 % to 80 %
- Do not place the Dreamoc in direct sunlight or near magnetism, corrosive gas or ultrasonic humidifier. This could cause malfunction.
- Do not expose the Dreamoc to soot or steam. Thick soot or steam could damage the electrical components and cause malfunctions.
- Keep the USB stick out of reach of children to prevent swallowing.
- Do not look directly into the LED as this can lead to eye damage.

## What you will need



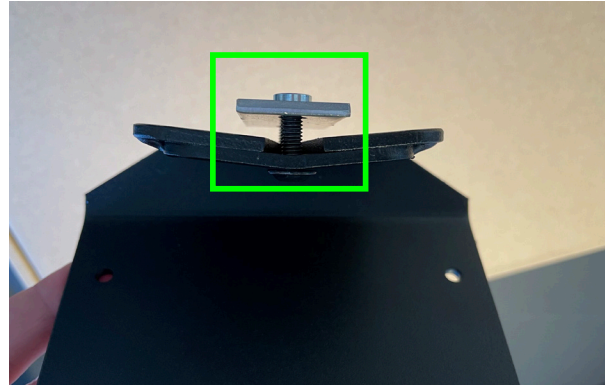
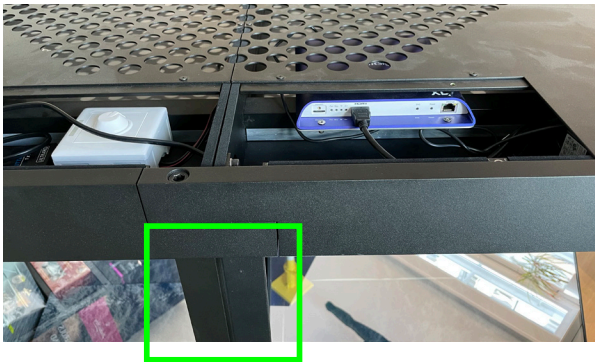
To add the optional touchscreen to a Dreamoc Diamond display you will need the following:

1. 1 x Touchscreen incl. power supply
2. 1 x VESA mount for Dreamoc Diamond incl. bolts and unbraco key
3. 1 x Ethernet cable (black)
4. Small sized Philips screwdriver - NOT SUPPLIED



## How to mount the optional touchscreen

1. Before starting be sure to identify the profile that will be right beneath the top panel opening.
2. Next loosely fix the silver bracket to the VESA mount using the two round-top bolts.

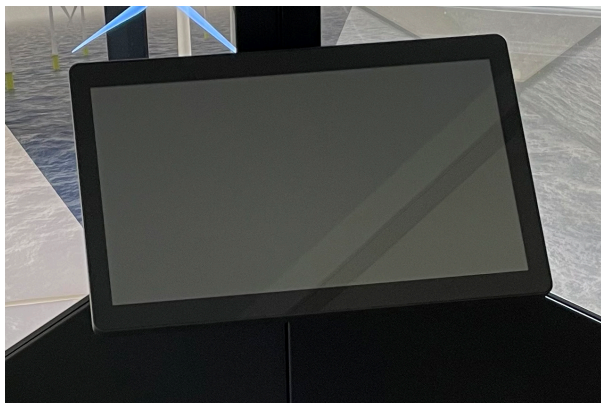


3. Slide the silver bracket down into the groove in the profile.  
**NOTE:** Be sure to do this before mounting the screen modules and then return to the assembly manual and assemble the rest of the Dreamoc Diamond before continuing the rest of this process.

4. Gently slide the VESA mount down to the desired position and tighten the bolts.



5. Mount the touchscreen to the VESA mount with the 4 small unbraco bolts.

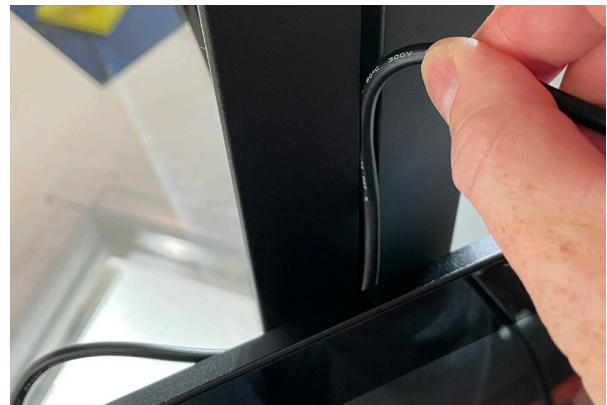
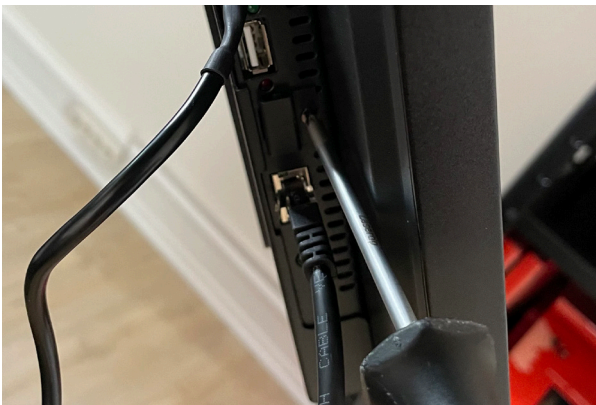




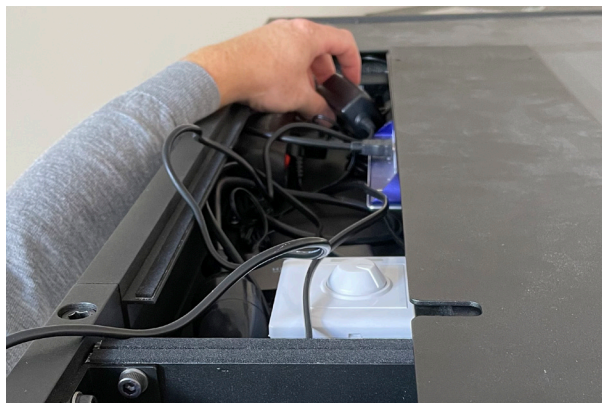
6. Insert the powercord in the touchscreen - making sure it clicks into place.
7. Insert the ethernet cable in the touchscreen - making sure it clicks into place.



8. Remove the safety bracket protecting the microSD card.
9. Starting with the powercord guide the cable into the profile from the touchscreen and up.



10. Next do the same with the ethernet cable.
11. Connect the power plug in an empty socket in the top panel opening.



12. Insert the ethernet cable in the player in the panel opening.
13. When closing the top panel guide the cables out the opening in the top.



This concludes the mounting process.

To program the touchscreen and player for interactivity, please refer to separate instructions.

# *Magic Matters*



For further information and pricing please contact Realfiction

Phone: +45 70 20 64 90

email: [contact@realfiction.com](mailto:contact@realfiction.com)

---

Realfiction and Dreamoc are registered trademarks owned by Realfiction ApS. Other marks may be mentioned here in that belong to other companies. © 2021 Realfiction ApS. All rights reserved.

Realfiction ApS | Antonigade 11, 1st floor | DK-1106 Copenhagen K, Denmark | Phone: +45 70 20 64 90