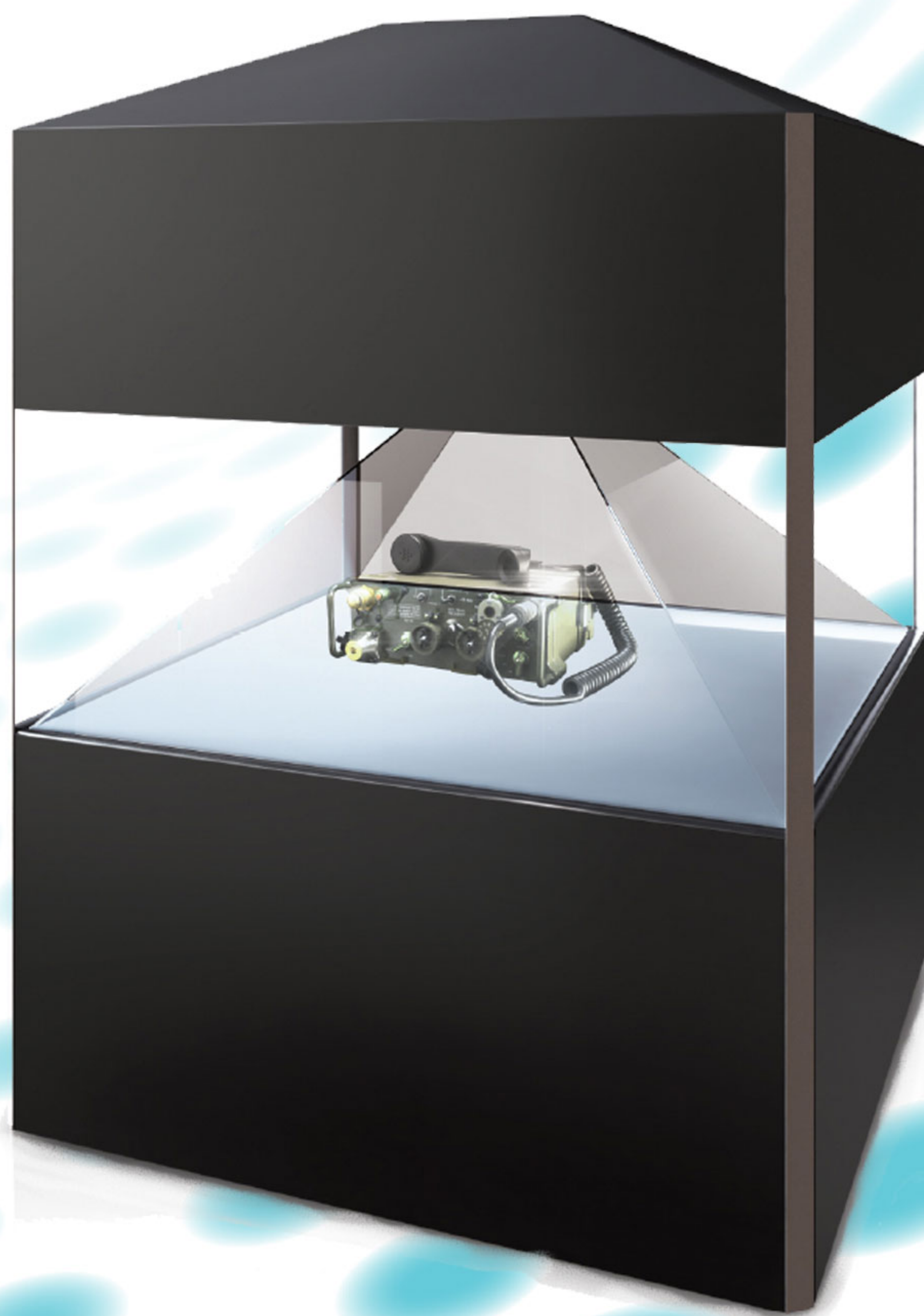


dreamocTM

Scandinavia 360 XXL

User Manual
version 1.1



Content:

- Security precautions (IMPORTANT INFORMATION)	2
- Product warranty	3
- Using the Dreamoc	4
- Placing an object inside the Dreamoc	5
- Changing the film content in the Dreamoc	5
- Connecting the Dreamoc to the internet	6
- Audio options	6
- Alternative options for content playback	7
- Adjusting the light	7
- Projector & Player Settings	7
- Cleaning the Dreamoc	7
- Troubleshooting	8
- Dimensions	8
- Power	8



Security precautions – IMPORTANT INFORMATION!

- ⚠ Treat the glass plates with extreme caution, as the glass is NOT tempered. Pay attention not to crack the corner tips.
- ⚠ When installing the glass plates, it is very important to use gloves recommended for glass handling.
- ⚠ If using suction cups it is very important that this is done by educated personnel.
- ⚠ It is very important that the metal housing is grounded.

Installation of the Dreamoc must be done according to this manual, and must be performed by an adult (Over 21 years).

The Dreamoc must be placed on a horizontal, stable and plane surface. Do not install the Dreamoc in narrow passageways or other places where a lot of people and equipment has to pass close by, thereby risking collisions that might cause damage to the glass.

The Dreamoc must be connected to a power outlet with current and voltage as described in the product marking.

During service and cleaning the Dreamoc must be turned off, and the power plug removed from the outlet. To disconnect the apparatus from the mains, the plug must be pulled out from the mains socket, therefore the mains plug shall be readily operable.

Handle the video projector with care. The video projector is a very delicate display device.

No sand or dust! Fine sand or dust entering the system could cause malfunctions or defects.

No water or oil! Water or oil entering the system could cause electric shock, malfunctions or defects.

The surface of the system might get slightly warm when using, but this does not indicate a fault.

Be careful of unusual ambient temperature. Using the system in a place where the temperature is over 40°C (140°F) or lower than 0°C (32°F) may result in malfunction.

Do not place the Dreamoc in direct sunlight or near magnetism, corrosive gas or ultrasonic humidifier. This could cause malfunction.

Do not expose the Dreamoc to soot or steam. Thick soot or steam could damage the electrical components and cause malfunctions.

Keep the memory card out of reach of children to prevent swallowing.

Product warranty

Realfiction warrants that any Product, which Realfiction delivers to the Distributor pursuant to this Agreement, will perform substantially in accordance with its published specifications for a period of twelve (12) months from the original date of purchase against defective materials and workmanship. As an exception to this, Realfiction offers a limited warranty of ninety (90) days on the glass plates in the Product. Realfiction does not warrant that any Product supplied will be uninterrupted or error-free in operation or that such Product will fit a particular purpose.


This Product is not considered to be defective in materials nor workmanship by reason that it requires adaptation in order to conform to national or local technical or safety standards in force in any country other than the one for which the Product was originally designed and manufactured. Realfiction and its partners shall not be liable for indirect or consequential loss or any damage to related equipment or materials.

Video projector warranty is according to standard from the video projector manufacturer. For further information see the manual for the projector.

Correct Disposal of This Product

(Waste Electrical & Electronic Equipment)

(Applicable in the European Union and other European countries with separate collection systems)

	<p>This marking shown on the product or its literature, indicates that it should not be disposed with other household wastes at the end of its working life. To prevent possible harm to the environment or human health from uncontrolled waste disposal, please separate this from other types of wastes and recycle it responsibly to promote the sustainable reuse of material resources. Household users should contact either the retailer where they purchased this product, or their local government office, for details of where and how they can take this item for environmentally safe recycling. Business users should contact their supplier and check the terms and conditions of the purchase contract. This product should not be mixed with other commercial wastes for disposal.</p>
---	--

Using the Dreamoc


The lifetime of a projector, and especially its lamp, is limited and affected by the pattern of use.

We strongly recommend that you consider the need for daily/weekly running time, and create a lifetime saving pattern of use.

The DS360XXL can be turned on and off in different ways.

- 1) Manually.
- 2) Automation by the use of a power plug timer.

Depending on the use of the DS360XXL, we recommend that a power plug timer is used to control the play out time for the system, to get the best maintenance setup from the beginning. The video projectors have an expected lamp lifetime of 3500 hours and if the system runs also at night, the lifetime of the projector lamps can be a short one.

 Be aware of lifetime limitations from video projector manufacturer. The warranty on the lamp is limited to 1000 hours of use.

We recommend using a digital power plug timer put on the main power supply, so you can program the on/off cycle for every single weekday separately. This will save a lot of hours for the video projector lamps.

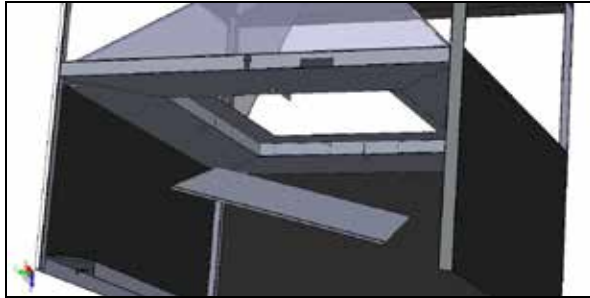
Power plug timer example:



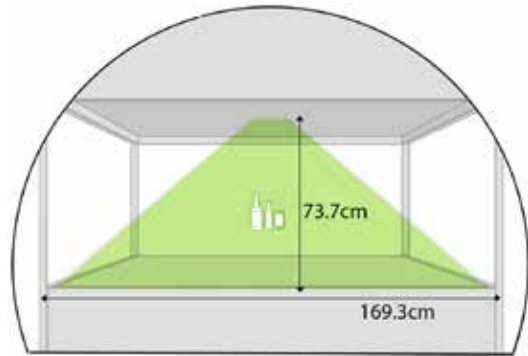
Placing an object inside the Dreamoc

To place an object inside the DS360XXL, you need to open the center stage arms, remove the white square center stage platform and place the object on top of it, eventually mounting the object with two sided tape, so the object does not fall off the center stage.

We recommend being two persons, when inserting objects into the Dreamoc. It is much easier.



Centre stage opening: 750x750mm




Space inside the DS360XXL

Changing the film content in the Dreamoc

To change the film content on the DS360XXL, you simply remove the side plate door, using the key to unlock and then lift up the door. Behind the side plate door, you will find the media player.



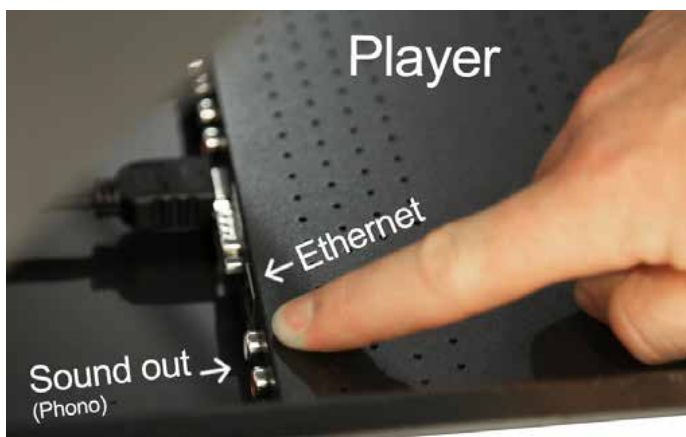
You can now see the compact flash card in the player. To exchange the card, take out the first flash card and insert the new card in the player with the label facing upwards. Do not use excessive force when inserting the card. Afterwards wait about 20 seconds and the DS360XXL will start showing the new content.

 We recommend keeping a backup copy of your Dreamoc content, either on a computer or on a backup CF card.

Connecting the Dreamoc to the internet

The Dreamoc can be connected to the internet, for remote access and/or automated content updating features. The Dreamoc can be configured to find its own way home to a specific server and self-update. So if you make an agreement about content updates with your local Realfiction reseller or distributor, you can get the updates automatically over the internet. By opening the side plate door, you can get access to the player inside the Dreamoc. It is now possible to connect the Dreamoc to the internet using a RJ45 cable. Make sure the cable goes out through the hole on the left side of the player.

For more information and documentation about the internet features, ask your reseller or Realfiction.



OPTIONAL: It is also possible to connect interactivity accessories such as buttons and proximity sensors.

Audio options

Realfiction have prepared your DS360XXL for a THX certified surround sound system including speakers in each corner and a sub-woofer placed in the centre of the system. The product is prepared for integration of the audio control panel in the same section as the player, opposite the key hole. The amplifier is built in to the subwoofer and all speaker cables go directly from the subwoofer through the corner profiles to drive the 4 top speakers.

NOTE: This audio product is an **option** that has to be purchased separately to the standard DS360XXL.

The DS360XXL standard player has a stereo Phono output. This will play out a stereo audio signal, which can be adapted to other audio systems as well.

Alternative options for content playback

In the standard configuration the DS360XXL will always show the same image on all 4 sides. If you want to show different images, you can connect a synchronized setup that can play 4 separate but synchronized signals. Other possibilities include connecting computers or tablets/smartphones to display interactive images in the DS360XXL.

Adjusting the light

The light is pre adjusted from factory to our recommended specifications.

During installation it is however possible to slightly adjusting the light intensity. This is done by operating the red dial on the LED driver with a small flat screwdriver.



Projector & Player Settings

Video projectors and media player are optimized and calibrated from factory to give the best result.

Remote controls for the video projectors are included from projector factory, if needed for special settings.

Cleaning the DS360XXL

When cleaning the glass mirrors off the DS360XXL, use a soft cloth eventually with water or window cleaner spray.

⚠ Do NOT use a dirty cloth. Dirt might contain small objects which can scratch the glass surface.

⚠ Never use stump objects to remove dirt from the optic.

The mirror surface is hard coded, but will still need to be handled with care. The metal housing can easily be cleaned with a damp cloth.

Troubleshooting

Problem (General)	Solution
No power	<ul style="list-style-type: none"> - Make sure the AC outlet has power - Make sure that the power cable is properly inserted - Check signal connections
LED lamp is off or blinking	<ul style="list-style-type: none"> - Make sure the AC outlet has power - Make sure that the power cable is properly inserted - Check wire connections through LED driver to LED lamp - Replace driver
Film is lacking or not playing at all	<ul style="list-style-type: none"> - Check that the projectors and player has power and is turned on - Take out, format and reload the CF card - Replace the CF card with a new one
The video images is out of scale/alignment	<ul style="list-style-type: none"> - Please check that the content has been correctly produced according to the DS360XXL content manual - Ensure that the video projectors settings has not been changed (Contact your reseller or Realfiction for correct settings) - In case the player has been adjusted manually, contact your reseller or Realfiction for the correct configuration file.

Dimensions:


Flight case 1: W. 1920mm x D. 725mm x H. 1480mm.

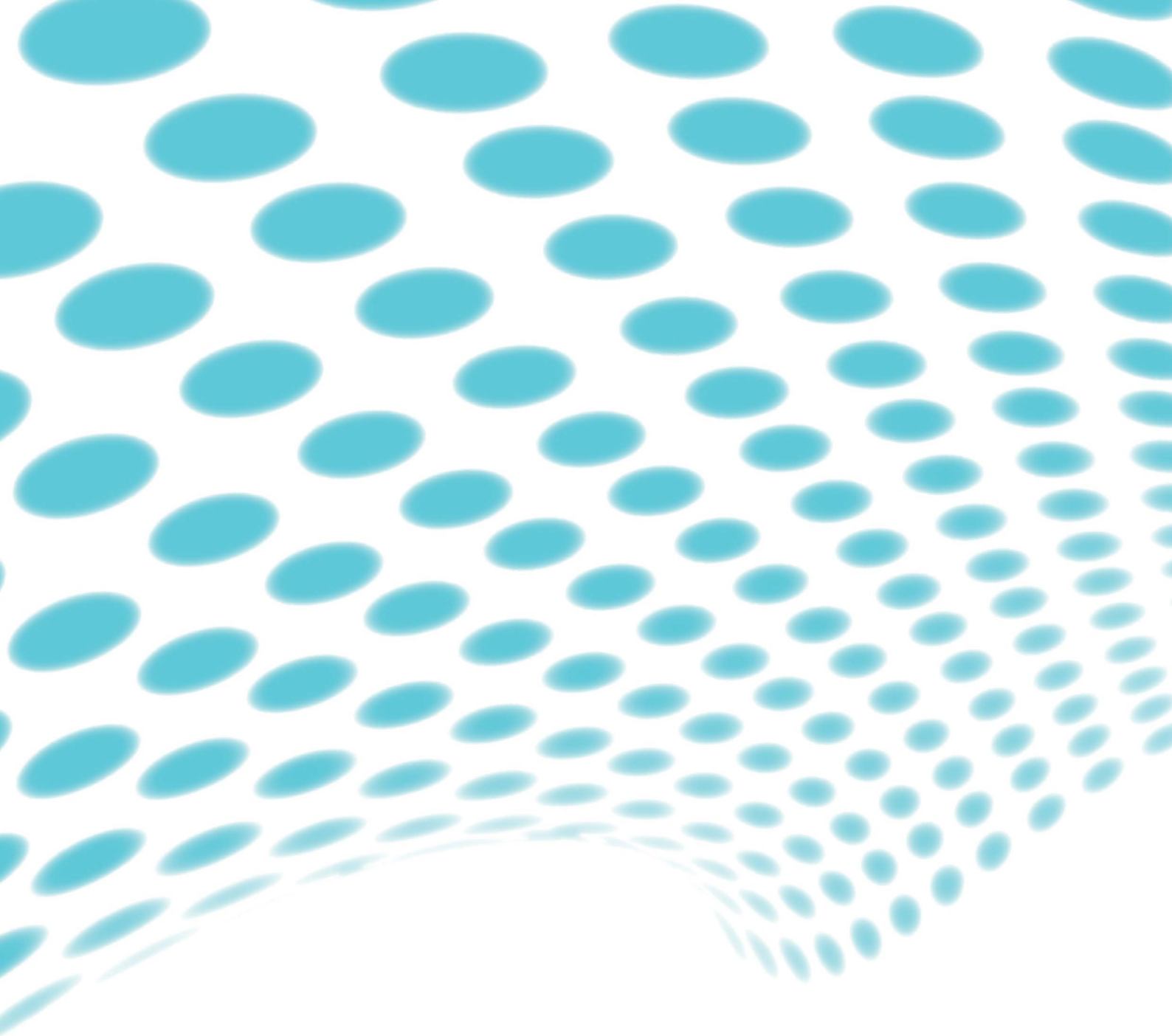
Flight case 2: W. 1900mm x D. 725mm x H. 1975mm.

DS360XXL when installed: H. 2450mm x D. 1780mm x W. 1780mm.

Power:

Requirements: AC 100-240V, 50-60 Hz, 240W.

 The optional audio system might require AC 220-240V



For further information and pricing
please contact Realfiction
phone number: +45 7020 6490
email: contact@realfiction.com

