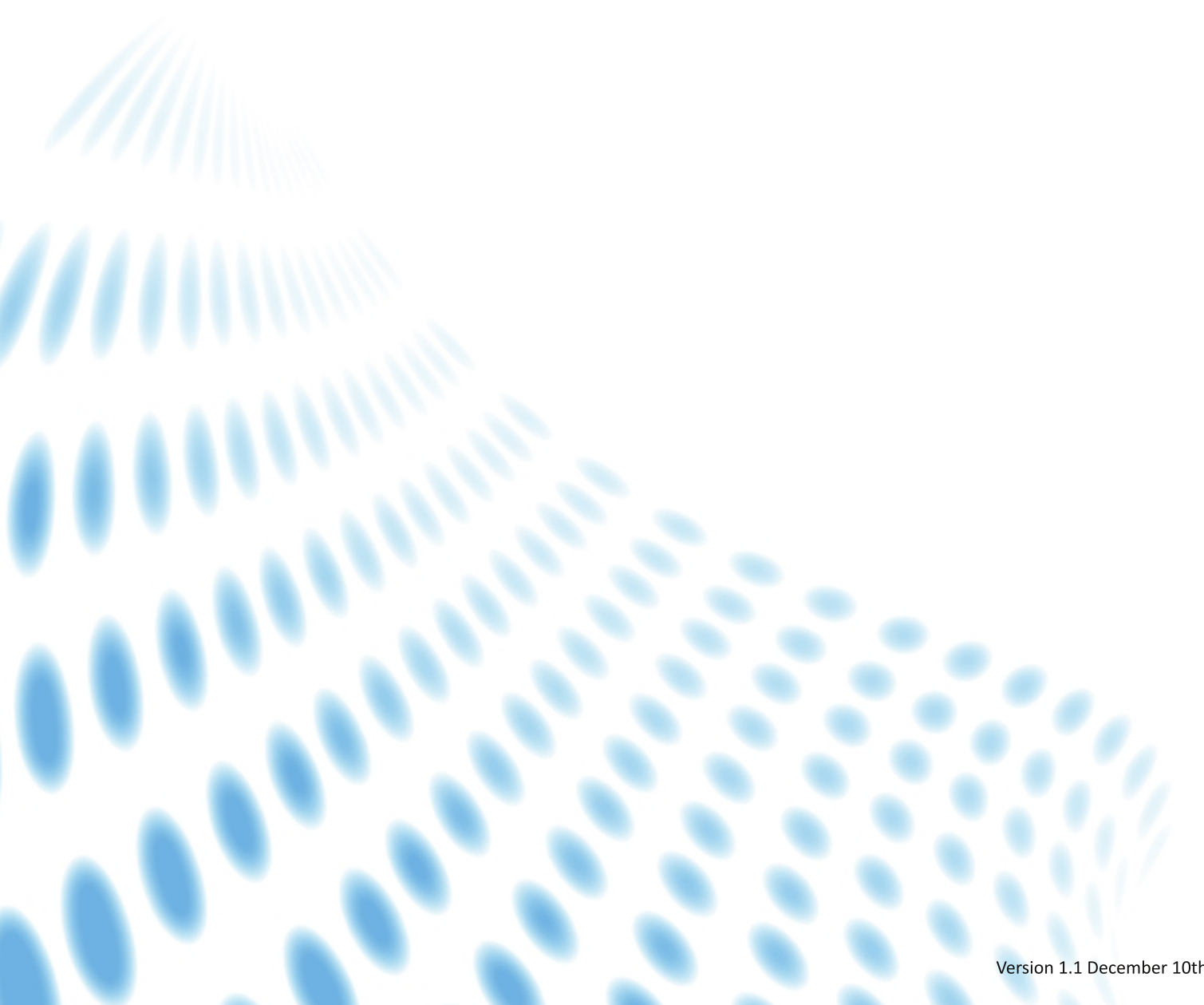


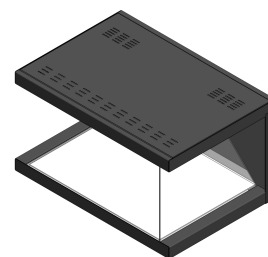
# dreamoc<sup>TM</sup> *HD 2*



factsheet



The Dreamoc HD is a 3 sided holographic display, which lets you combine a physical product with 3D holographic content. The Dreamoc is equipped with a key protected backdoor, from where you have access to the media player, the LED and the chamber inside of the Dreamoc.



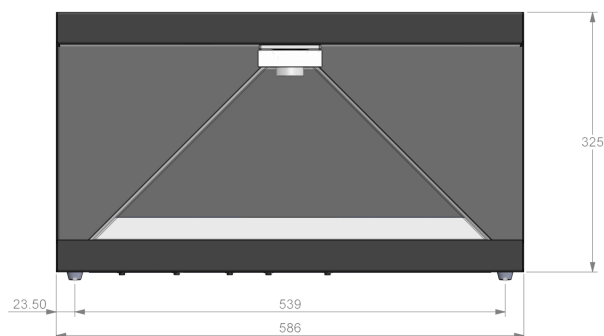
## FEATURES

- 3 sided viewing
- Combine physical objects with holographic content
- Plug and Play
- Easy change of content
- Adjustable LED light
- On/Off switch
- Restart button for player
- Remote Up/Download of content via FTP

- High ambient light tolerance
- Bright and sharp picture quality
- Key protected backdoor
- Adjustable light mask for LED
- Changeable bottom plate
- Built-in loudspeakers
- Remote configuration via HTTP

## SPECIFICATIONS

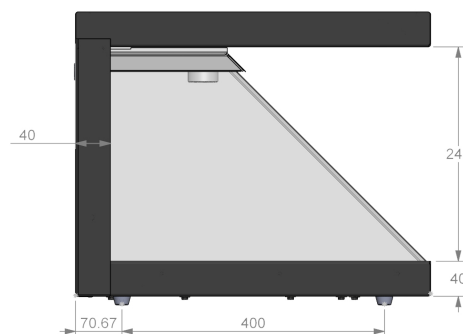
Chassis	Steel
Consumption	65W
Power input	100-240V, 50-60 Hz
Screen size	24", 16:9
Resolution	1920 x 1080
Content	MPEG2, WMV9
Sound out	Mini-jack, Stereo
LED	15 W
LED Driver	Adjustable
Input	CF Flash Card
Network	10/100 Mbps Ethernet



## MEASUREMENTS

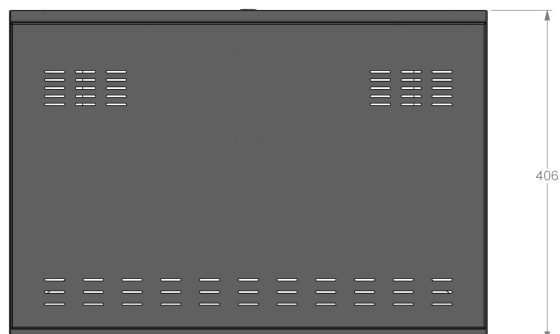
Dreamoc HD	
WxHxD	586x325x406 mm
Weight	18 Kg

Freight measurements	
WxHxD	690x550x440 mm
Weight:	22 Kg



## PACKAGE CONTENT

- Dreamoc HD
- CF Flash card 2GB
- Bottom plate (white)
- Power cord 500 cm
- Keys (2 pcs)
- Cleaning cloth
- Manual



## ACCESORIES

### FLIGHTCASE TROLLEY

Optimal for transportation if you use the Dreamoc in various locations. The flightcase has wheels and an expandable handle, which makes it suitable for personal transport.

WxHxD 700x550x450 mm  
Weight 12 Kg



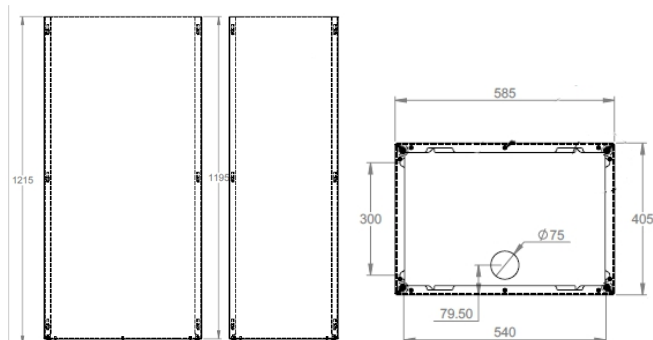
### STAND

The stand puts the Dreamoc in a perfect viewing angle. Produced in aluminum.

WxHxD 585x1215x405

Freight measurements

WxHxD 1240x70x620 mm  
Weight 24 Kg



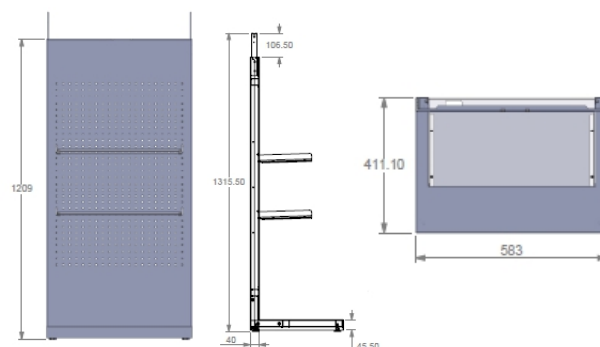
### MULTISTAND

The multistand is produced in aluminum and includes 2 adjustable glass shelves.

WxHxD 583x1209x411 mm

Freight measurements

WxHxD 1410x120x610 mm  
Weight 33 Kg



### OTHER ACCESORIES

PIR motion sensor  
Interactivity box w/12 buttons (white)  
Interactivity box w/12 buttons (black)  
Bottom plate (Black)

Specifications are subject to change without notice. We accept no liability for errors and changes.



**REALFICTION™**  
THE ELECTRONIC MEDIA INVENTORS

Sankt Annæ Plads 13, 5th Floor  
DK-1250 Copenhagen K  
Denmark

0000000000