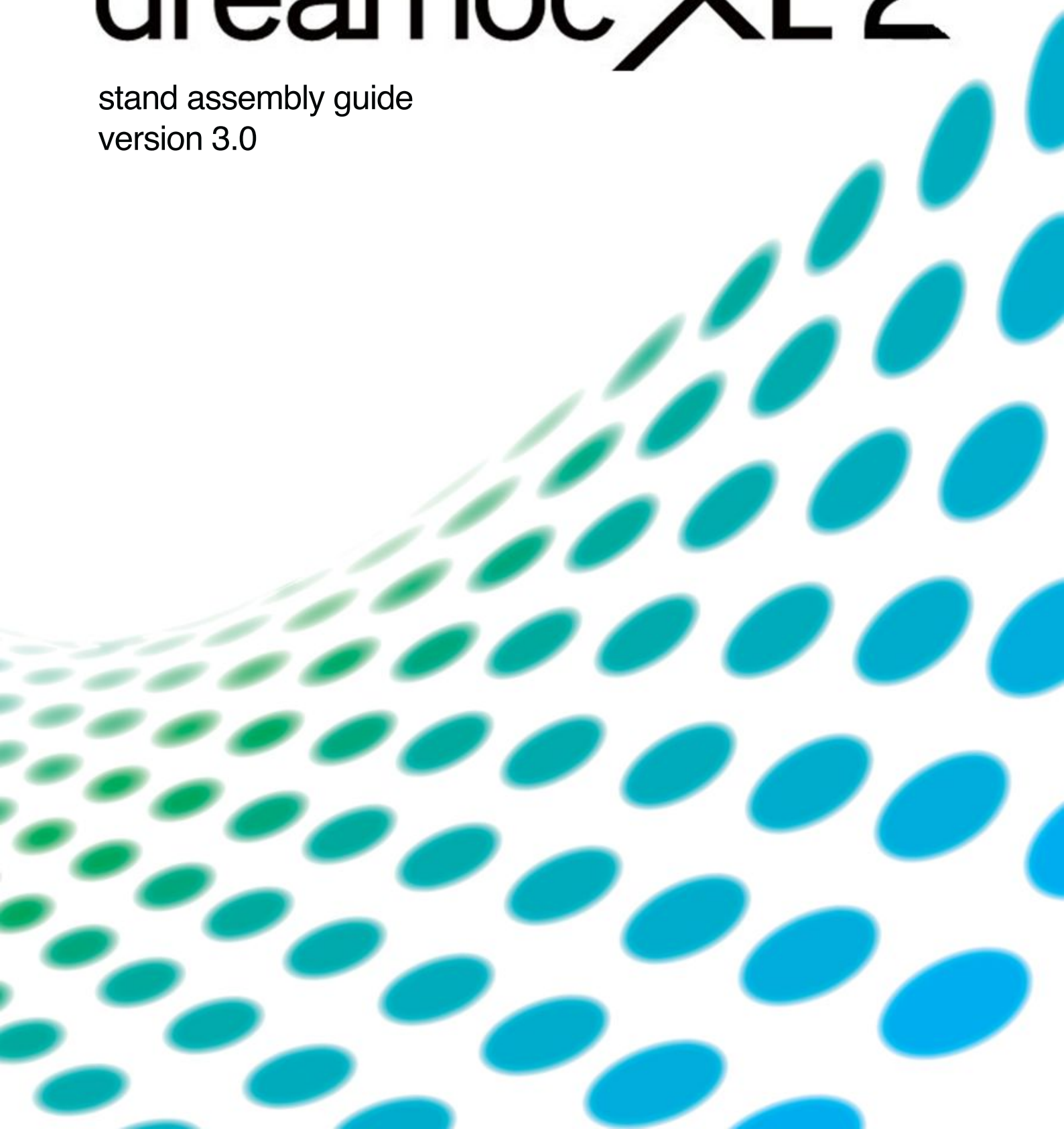




REALFICTION™

dreamoc™ XL 2

stand assembly guide
version 3.0



Content

Package contents	2
How to assemble the stand	3
Troubleshooting	8

When receiving the Dreamoc Stand

Please be careful when unwrapping the Dreamoc Stand. The surface is hard coated, but will still need to be handled with care.

Package contents



How to assemble the stand

NB: To avoid damage or scratches, it is a good idea to assemble the stand on top of a carpet or the open packaging.

① Start by clicking the one side-panel together with the one edge-panel as showed below. The hooks should face down, when clicking together.



② Now the two sides has been clicked together, click the second side-panel together with the already attached edge-panel.



Then, attach the last edge-panel to the two side-panels, so the four sides form a rectangular →



③ The stand is now assembled, but should be stabilized by adding the brace hold together by the bolts.

Start by adding the screws, that should hold the structure together. In the corners like showed below. Use two screws on all four corners.



④ Now the brace should be attached. Unfold it, and stretch it across the stand, making the wholes fit with the bolts, sticking down from the edge-panels.

NB: Two persons are recommended for this job.



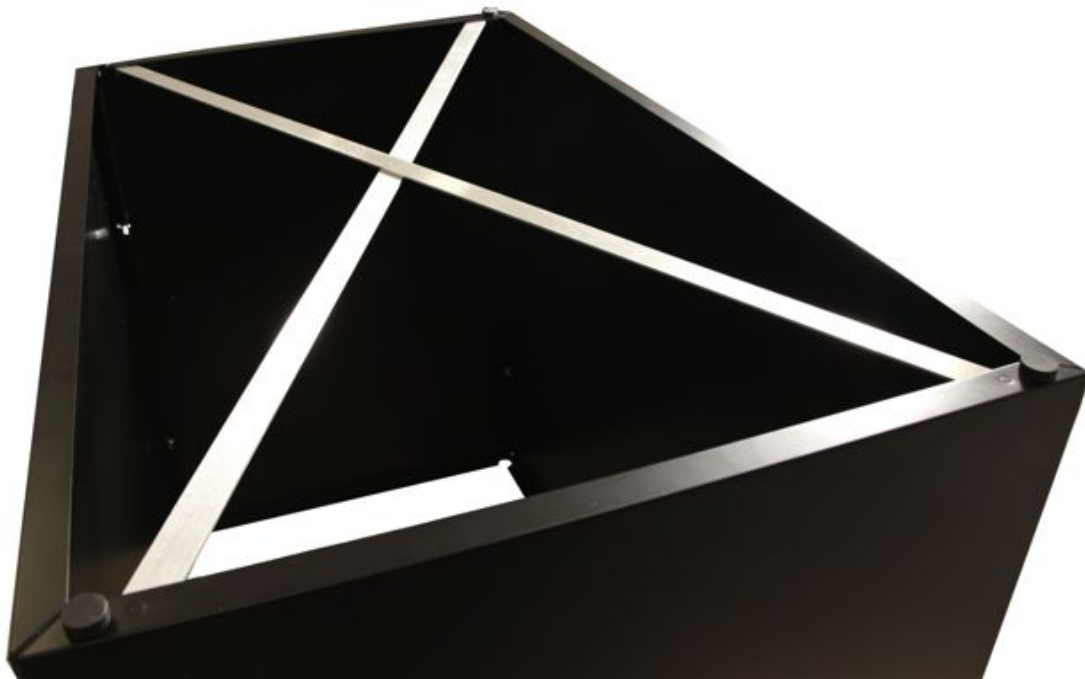
Once the brace is in place, grab a wing screw and screw it onto the bolts sticking down as showed below.



⑤ Now the structure is assembled, and the feet should be attached. In every corner there is a hole for screwing the feet on. Grab the four feet and screw them on as showed below.

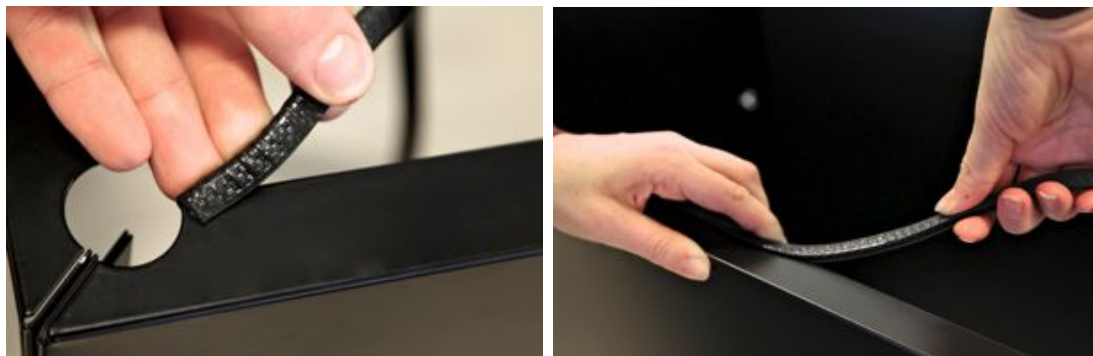


The stand is then assembled and should look like this.



Now turn the stand over 180 degrees.

⑥ To protect the edges and to avoid the Dreamoc from sliding, you can apply the rubber strips to the edges on the top of the stand.



Start in the corners, as shown above and use both hands to apply the strips on all four sides.

The stand now looks like below:




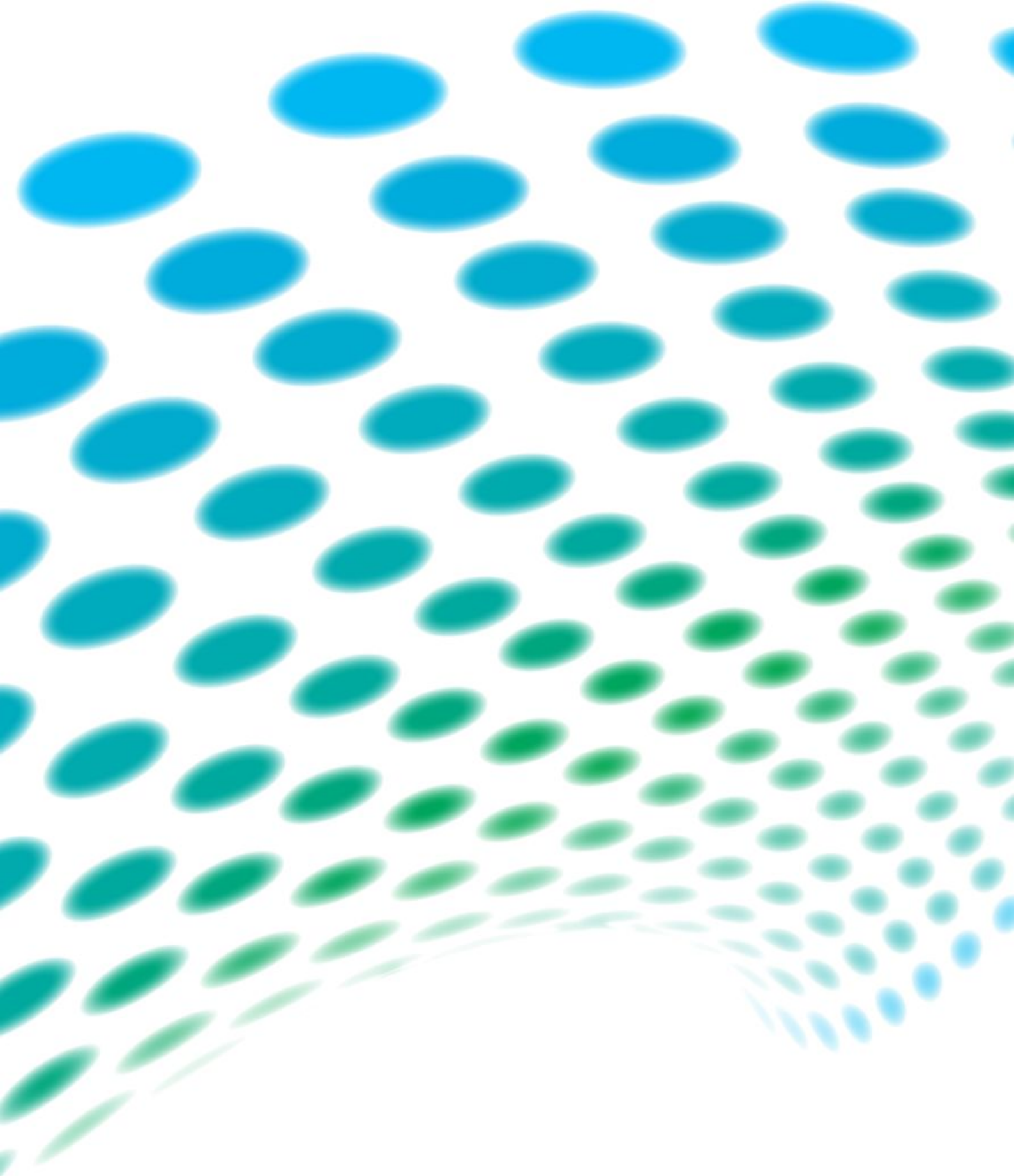
Now the stand is ready to use together with the Dreamoc XL2.

Gently lift the Dreamoc XL2 to the top of the stand, making sure the Dreamoc's feet fits into the holes on the top of the stand. Now you're ready to show off great stuff in your Dreamoc XL2!



Troubleshooting

Problem (General)	Solution
The stand is unbalanced	<ul style="list-style-type: none">- Make sure that the screws, holding the stand together, is tightened enough.- Loosen the screws and cross target the stand as shown below:  <p>The image shows a person's hands adjusting a black, rectangular stand. A white ruler is held across the top of the stand to measure the length of a diagonal. The stand is tilted, and the person is loosening screws on the sides. This visualizes the step of loosening screws and measuring the diagonals to ensure they are equal in length.</p> <ul style="list-style-type: none">- When the diagonals are precisely equal in length, fasten the screws in the sides again.
The stand tilts	<ul style="list-style-type: none">- You can always adjust the feet under the stand to adjust the tilting to the underlay.



For further information and pricing
please contact RealFiction
phone number: +45 70206490
email: contact@realfiction.com

