

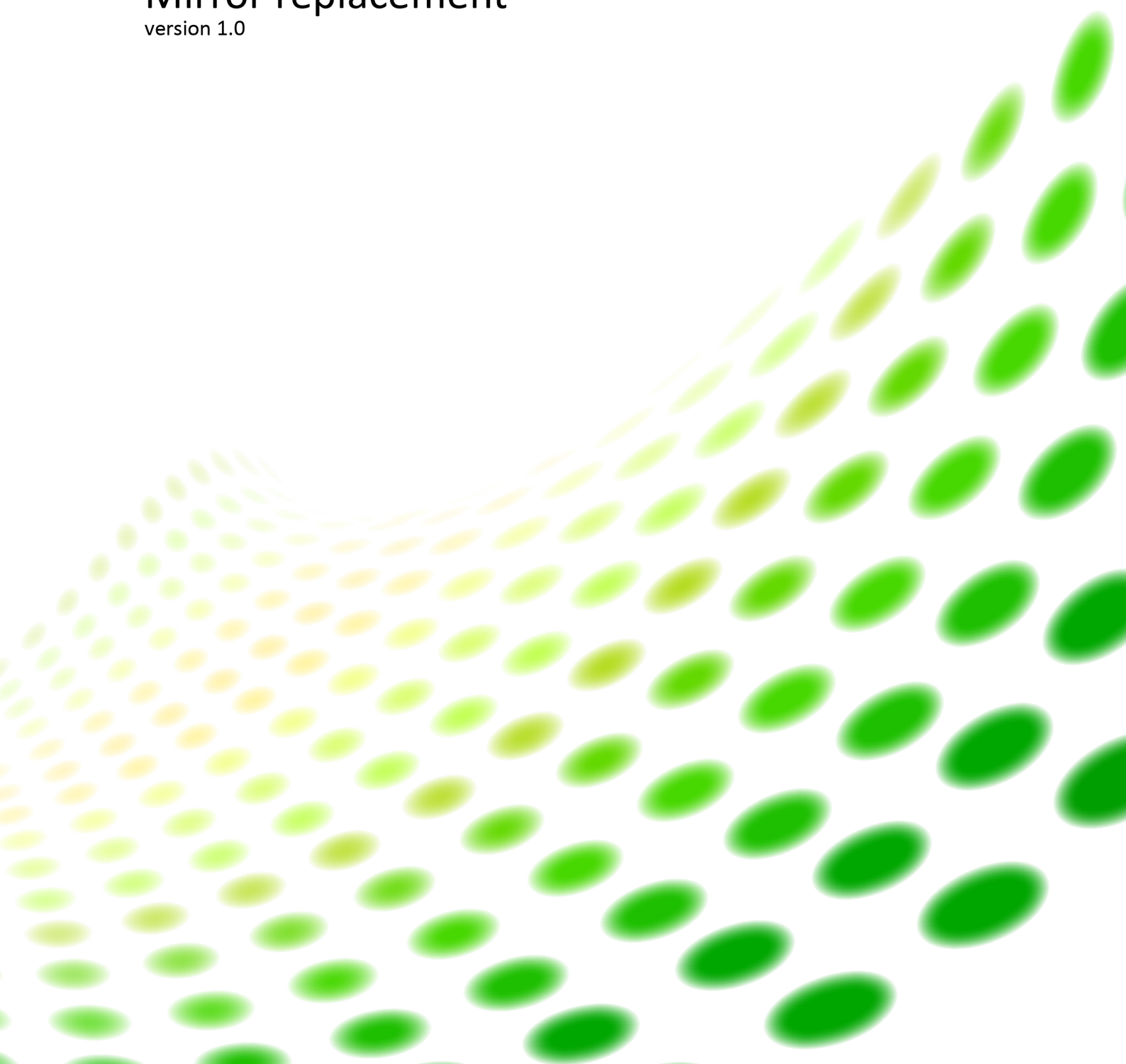


dreamocTMXL2

Service instruction

Mirror replacement

version 1.0



Security precautions

Service handling of the Dreamoc must be done by professional personal and according to the general descriptions in the user manual for this product.

Step 1 Remove the top cover.

Remove the screws in the top cover and then remove the top cover.



Step 2 Remove the LCD screen clamp plate.

Remove two bolts in all four corners and then remove the four clamp plates.



Step 3 Remove the cables from the LCD screen.

Clip cable tie at the power and HDMI cable and then remove the power and HDMI cable from the LCD screen.



Step 4 Remove the LCD screen

After removing the four clamp plates and the two cables, the LCD screen can be removed.



Step 5 Remove the two doors.

Use the key to remove the back door, then slide the four clamps on the inner door away from the inner door, and then remove the inner door.



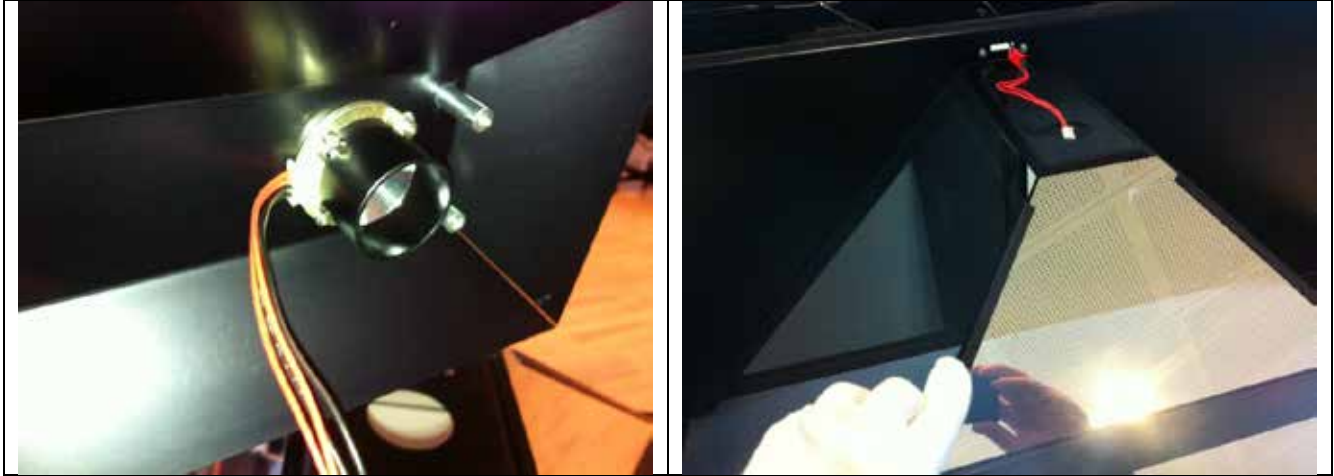
Step 6 Remove Top LED lamp housing

Before remove the top LED lamp-house, remove the four screws inside the LED lamp house.



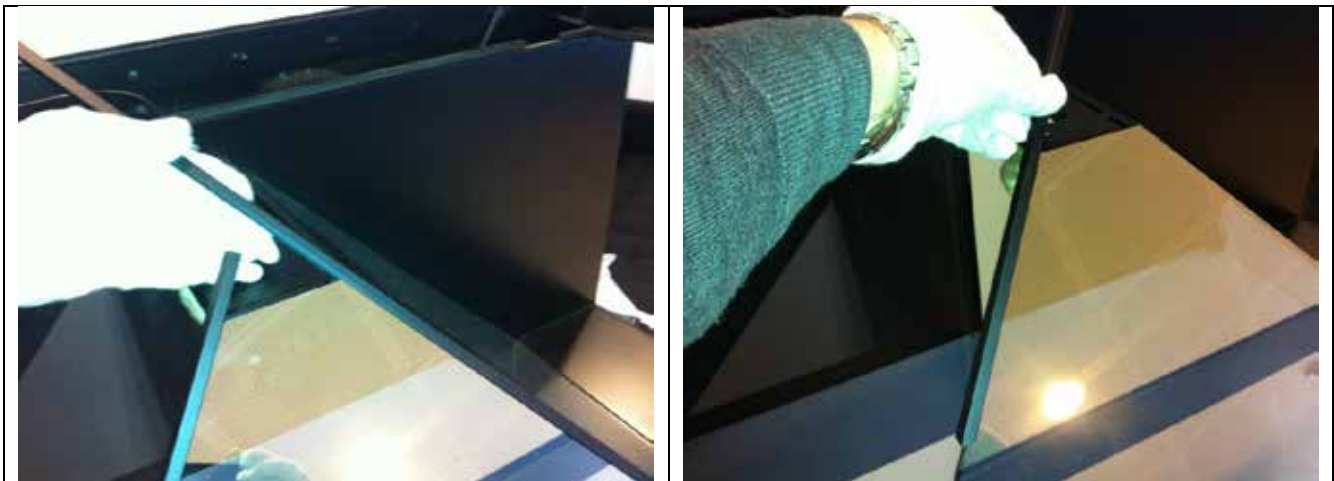
Step 7 Remove LED lamp wire.

To be able to move the LED lamp-house away from the Dreamoc, remove the wire from the LED lamp.



Step 8 Remove front mirror-aluminum-rails.

Have soft clear gloves on when handling the mirrors. Slide up the two front mirror-aluminum-rails.



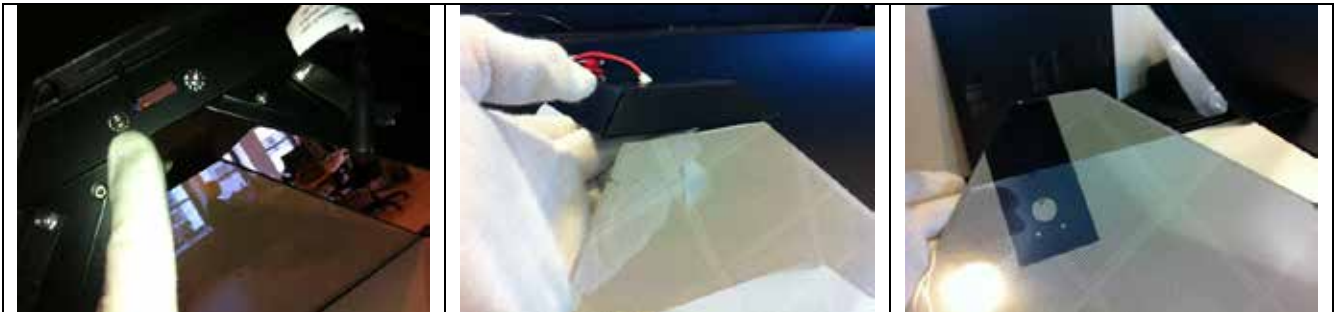
Step 9 Remove the two side mirrors.

When removing the side mirrors, slide the mirrors up starting from the back.



Step 10 Remove front mirror.

Loosen the two screws in the LED lamp house at the back of the Dreamoc. Lift up the LED lamp house in the front and move the top of the front mirror down under the LED lamp house. Then remove the front mirror from the Dreamoc.



Step 11 Assemble the mirrors.

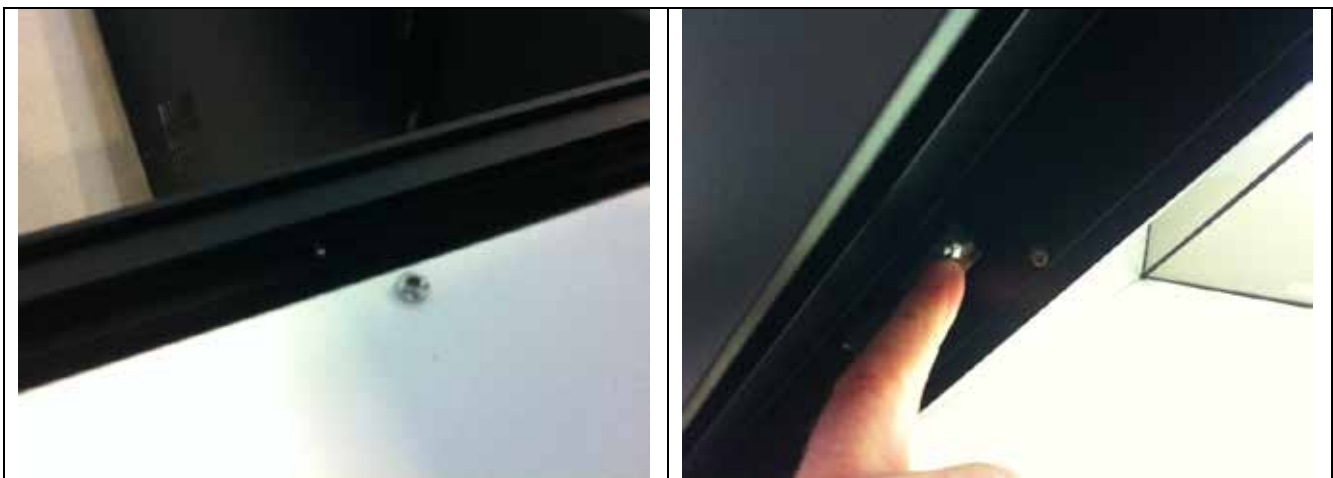
When assembling the mirrors just go through the same steps as when removing the mirrors but from the back from step 12 to 1. When sliding back down the front mirror-aluminum-rails make sure that they are all the way down.

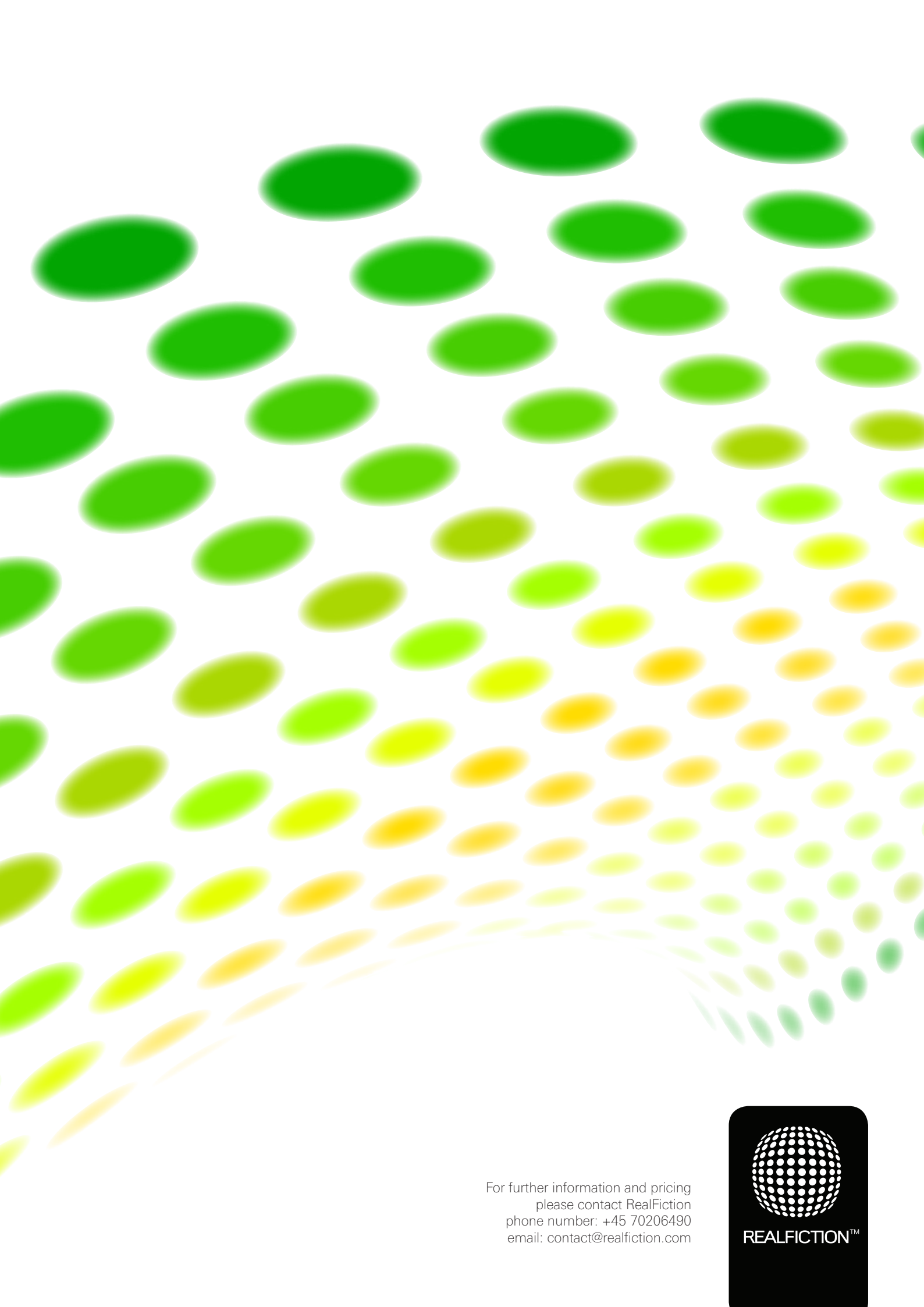


Troubleshooting.

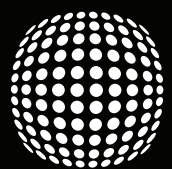
If it is very difficult to remove or assemble the mirrors then do the following:

- Remove the screw on the white bottom plate and remove the white bottom plate.
- Loosen the mirror aluminum rails at the back of the side mirrors, by loosening the six bolts.





For further information and pricing
please contact RealFiction
phone number: +45 70206490
email: contact@realfiction.com



REALFICTION™